

Adding decimals with the same number of decimal places

- 1 Complete the additions.
Use the place value charts to help you.

a) $4.45 + 3.21 =$

Ones	Tenths	Hundredths
1 1 1	0.1 0.1 0.1	0.01 0.01 0.01
1	0.1	0.01 0.01
1 1 1	0.1 0.1	0.01

		4	•	4	5
	+	3	•	2	1
		<hr/>			
			•		
		<hr/>			



1 b) $4.45 + 3.61 =$

Ones	Tenths	Hundredths
4	4	5
3	6	1

		4	•	4	5
	+	3	•	6	1
			•		

c) $4.45 + 3.78 =$

Ones	Tenths	Hundredths
4	4	5
3	7	8

		4	•	4	5
	+	3	•	7	8
			•		

Which calculation was easier? Talk about it with a partner.



2

Use the column method to work out the additions.

a)

		5	•	3
	+	2	•	5
		<hr/>		
			•	
		<hr/>		

c)

		2	•	3	2	
	+	1	0	•	1	7
		<hr/>				
				•		
		<hr/>				

b)

		6	•	0	3
	+	3	•	9	1
		<hr/>			
			•		
		<hr/>			

d)

		6	•	3	7
	+	6	•	2	6
		<hr/>			
			•		
		<hr/>			

2

e)

		3	•	1	0	2	
	+	5	•	8	7	6	
		—————					
			•				
		—————					

g)

		5	•	7	5		
		5	•	3	2		
	+	5	•	0	1		
		—————					
			•				
		—————					

f)

	1	2	•	0	3	4	
	+		9	•	2	7	
		—————					
			•				
		—————					

h)

		1	4	•	9	9	
	+	1	2	•	3	7	
		—————					
				•			
		—————					

3 Work out the calculations.

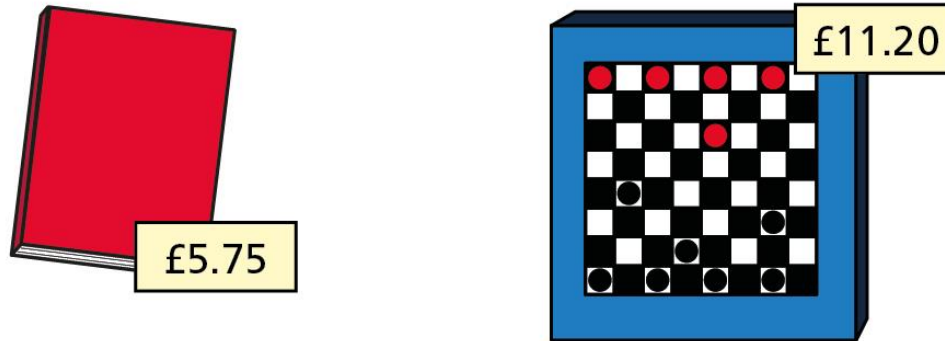
Write $<$, $>$ or $=$ to make the statements correct.

a) $0.64 + 4.79$ $5.01 + 0.23$

b) $7.427 + 3.238$ $5.427 + 5.832$

c) $3.08 + 4.63$ $4.84 + 2.87$

- 4 Teddy is working out the total cost of these items.



Here are his workings.

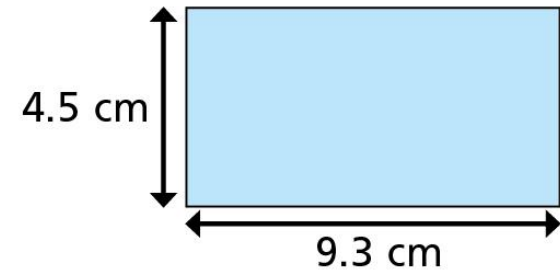
$$\begin{array}{r}
 5 \cdot 7 \quad 5 \\
 + \quad 1 \quad 1 \cdot 2 \quad 0 \\
 \hline
 6 \quad 8 \cdot 7 \quad 0
 \end{array}$$

Talk to a partner about Teddy's mistake.

Work out the correct answer.

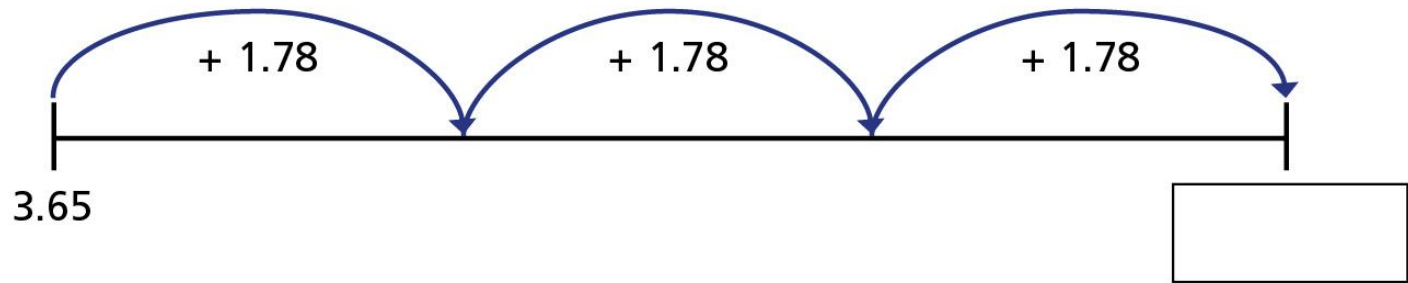


- 5 Work out the perimeter of the shape.



perimeter = cm

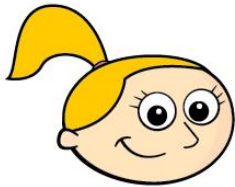
- 6 Complete the number line.





7

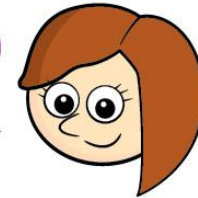
Eva starts with the number 1.62



Eva

I added a number
and got 2.8

Rosie



This is impossible as 2.8
only has one digit after
the decimal.

Is Rosie correct? _____

Talk about it with a partner.

