

Summer 2 Week 4 w/c 22/6/20 - Geography

Activity below and/or activity on Seesaw

Because our focus is on habitats in science, it would be a good idea to explore the habitats and places around Dunnington.

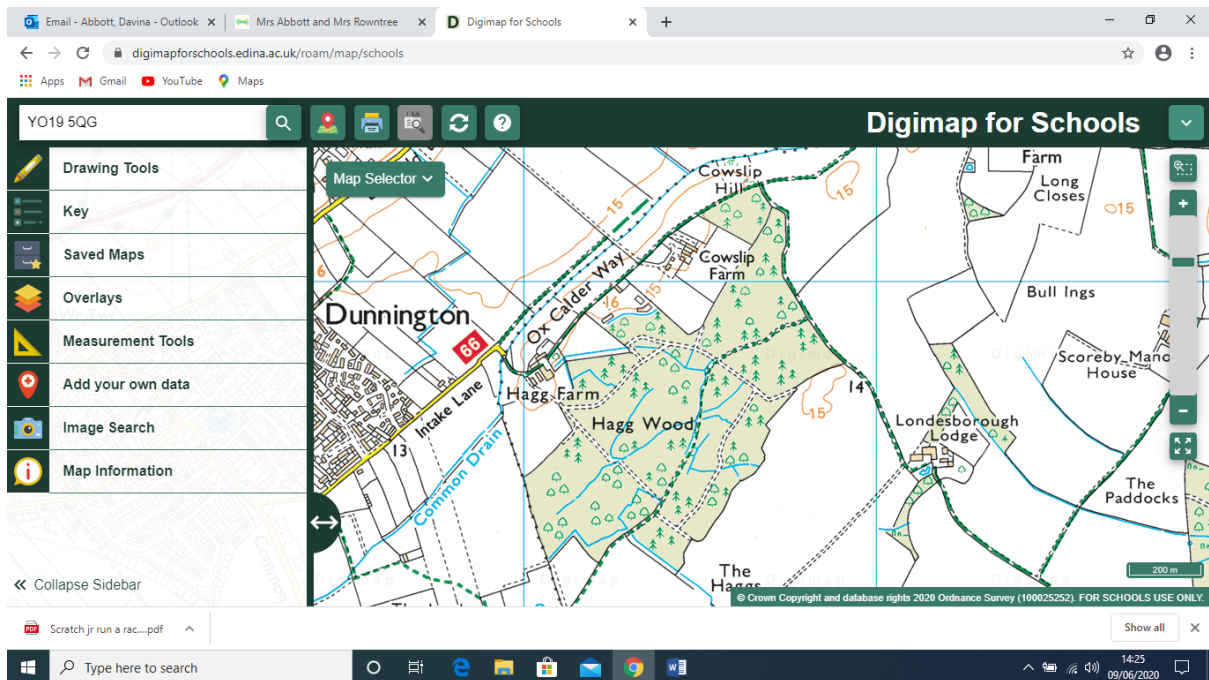
Using Digimap, why not have a look at Hagg Wood?

(<https://digimapforschools.edina.ac.uk/> Username YO195QG (no spaces) password hapsed4792)

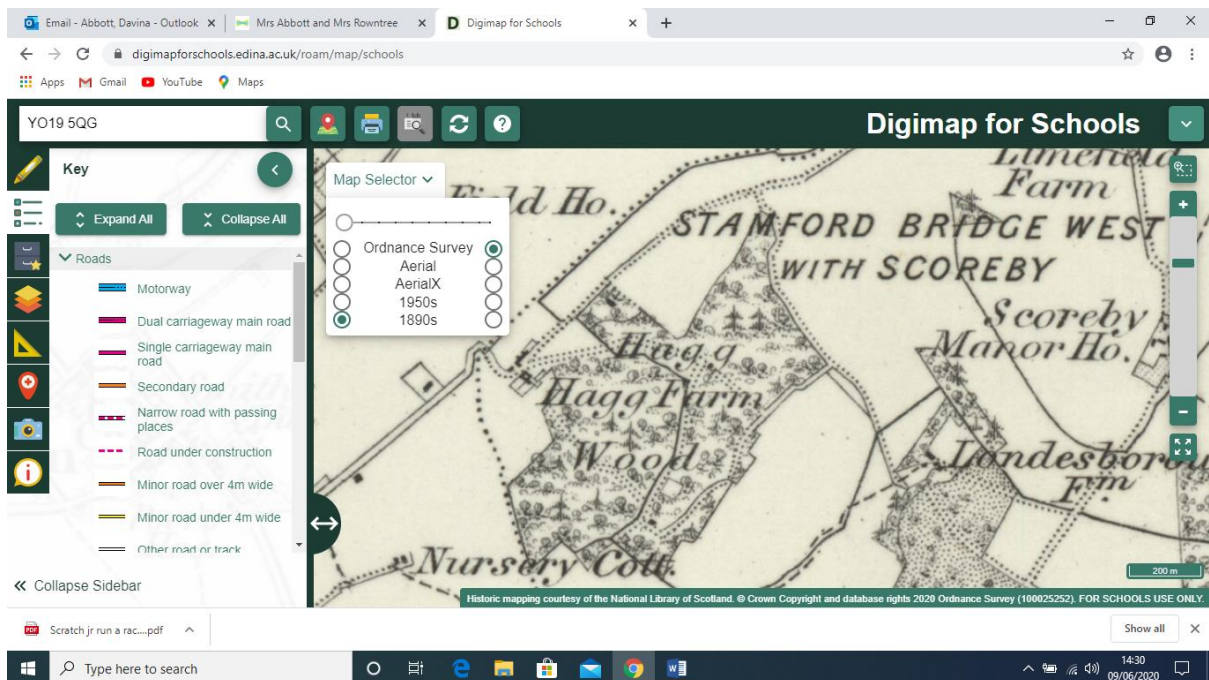
Hagg Wood

Here are some ideas:-

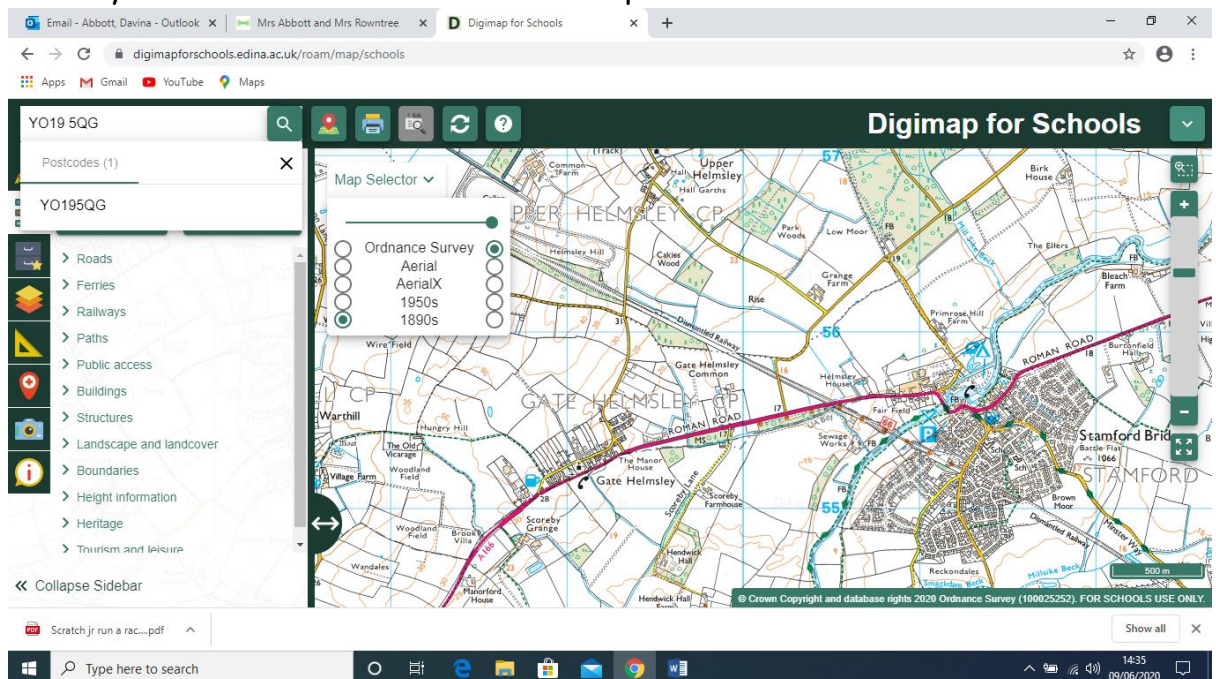
1. Using the measuring tool, measure how far it would be to walk around the edge of the wood.



2. Click on 'key' below 'drawing tools' and find out what some of the symbols on the map mean. Draw the symbol in your book and by the side write what it means.
3. Plan your own walking route through the wood, following the tracks and measure how long it would be.
4. Find your own house on the map and then draw your route to Hagg Wood using the 'measurement tools' button and see how far it is.



5. Use the 'map selector' as above, and see what Hagg Wood looked like in 1890. What differences can you see with the modern map? Use the slider (or Drag to change) to change between the two maps.
6. Use the 'aerialx' to see what the land looks like from a bird's eye view.
7. Many of you cycle along route 66 from Hagg Wood to Stamford Bridge. See if you can follow the route on the map.



8. Zoom out a bit so that you can see all of the above. What do you notice about the road? When was it first built?
9. Can you find The Balloon Tree? What can you see running through Stamford Bridge? What other symbols can you see? Using the slider, what did there use to be in the 1890s?

Maps are fascinating tools as they can show how places have developed and show historical links. Enjoy using Digimap!