



Strong Societies

Instructions

What to do

Step 1:

Read through the information about ant societies on **Worksheet 1** then answer the questions provided.

Step 2:

Find out about other species who also live in societies. Pick one species to do some further research on and then complete **Worksheet 2**.

Step 3:

Use **Worksheet 3** to consider what sort of society you would like to live in and how you will help to support that society.



Ant societies

Ants live in your garden, in deserts and rain forests — anywhere but the coldest and highest places on Earth. They are successful, because they set up amazing societies called colonies in which every ant member has a role.



Ants are social insects. They live in large groups called colonies which are made up of the queen, the males and the worker ants.

The job of a queen is to lay millions of eggs. She is the largest ant in the colony.

The male ants have wings. Their only role is to mate with the queen. After they have mated, the males do not usually live for long.

Most ants in the colony are workers and they are all female. Worker ants build and clean the nest, search for food for the colony and feed the larvae (young). Some of the workers are called soldier ants because they protect the colony if it is attacked by another creature.

As well as being highly organised, ants are also good communicators. For example, worker ants mark a line to where they have found a source of food using a chemical called pheromone. This helps the rest of the colony follow the shortest route to find food.



Some species of ants have developed a helpful relationship with small sap sucking insects called aphids. After digesting plant sap, aphids give out a sweet sticky liquid called honeydew which ants eat. In return the ants protect the aphids they feed from by attacking any other insect who tries to prey on them.



Questions

Q: What are the different roles in an ant colony?

Q: Why is each role important to the survival of the colony?

Q: Describe one way in which ants communicate with each other?

Q: Why do some ant species protect aphids?

Q: What jobs (roles) are important to a successful human society? Why?



Social animals

Name of species:

Group name:

Q. What different roles do members of this species have?

Q. How does working together help the survival of this species?

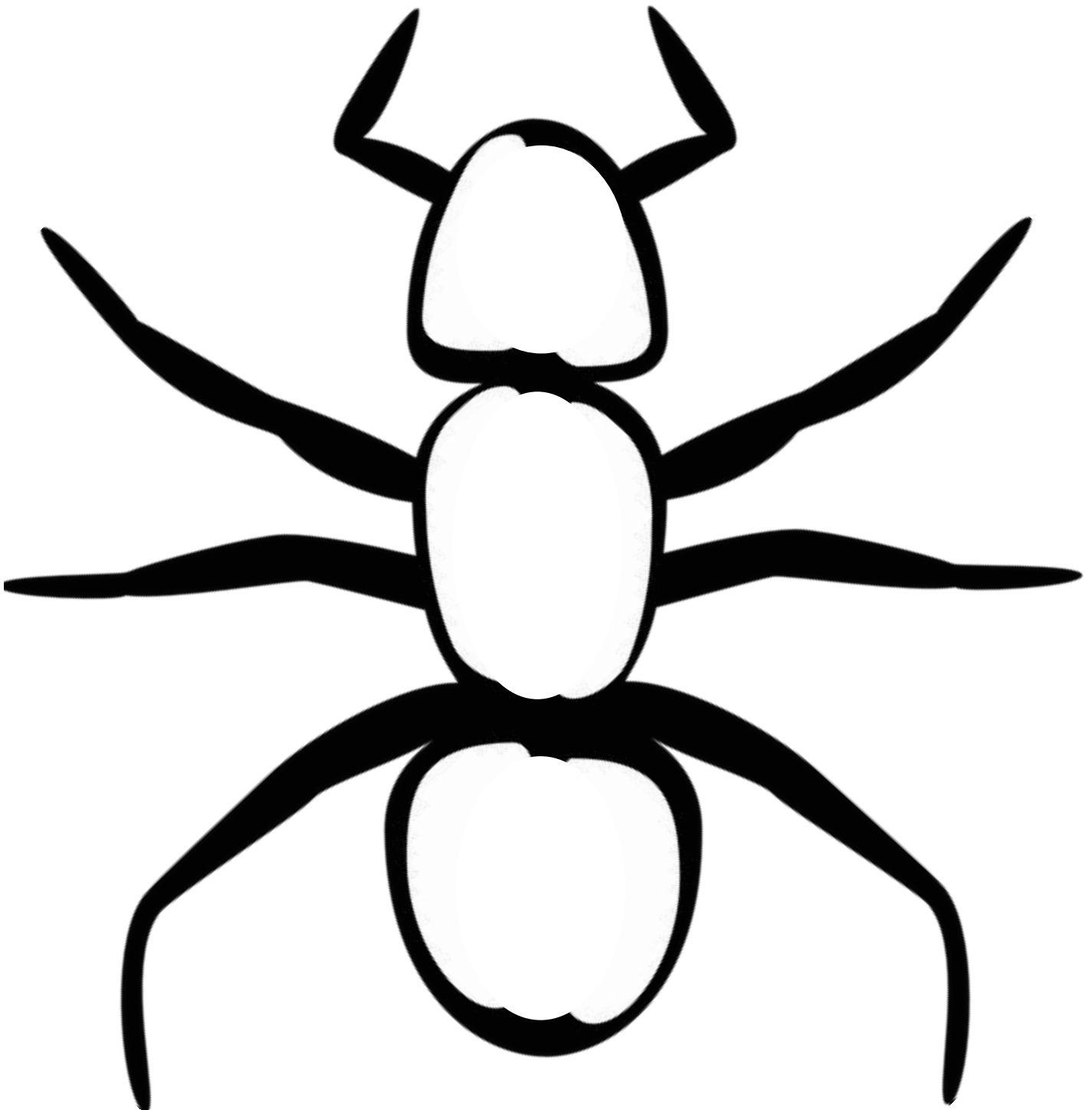
Q. How do members of this species communicate with each other?

Q. What, if anything, could humans learn from this animal society?



My society

Pick three words that best describe the type of society you want to live in. Write them on your ant before decorating it.





Roles in society



Q. What job would you like to have when you are older?

Q. How would you help society by doing this job?

Q. What might happen to society if nobody did this job?

Q. What training do you need to do this job?